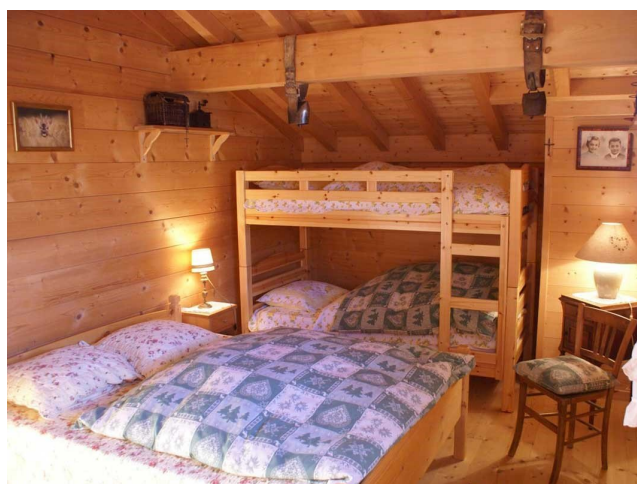


Alpine View Chalet

FLM003

Avoriaz | Portes du Soleil | France



 2  2  100m²

€550,000

This property is located in a quiet area and offers a spectacular view of the surrounding Alps. In the basement, there is a garage and a cellar. The ground floor has a bathroom, a spacious living room with dining area, kitchen and a south-facing terrace. Upstairs are two large bedrooms and a bathroom. A building permit has been issued for the potential extension of the property by 45 m².